



UTP PowerCat 5e
PVC 4 Pair Cable,
305m

FEATURES SUMMARY

Category 5e compliant. The PowerCat 5e cable is a basic element of the PowerCat 5e line of products designed for high speed network applications (eg. GigaEthernet 1000Base-T). 4 pair UTP with different pitch for each pair. Small outside diameter, high flexibility. Available in 305m lengths and packed in carton boxes for easy transportation and laying in troughs. The cable does not feed fire and goes out when the source of fire is removed. Recommended as a basic product for horizontal cabling.

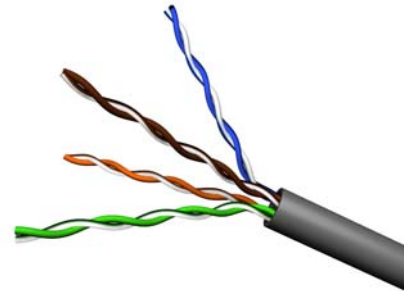
ELECTRIC PARAMETERS:

Resistance [Ω /km]: 98
Nominal propagation: 69%

MECHANICAL PARAMETERS

Conductor size [mm]: 24 AWG (0.51mm)
Insulated conductor diameter [mm]: ≤ 1.0
Single pair shield: none
Pair number: 4
Cable shield: none
Outside cable diameter [mm]: ≤ 5.50
Temperature range [°C]
during installation: 0 to +50 °C
during operation: -20 to +60 °C
Acceptable bend radius
during installation: 8 x cable size
during operation: 4 x cable size
Sheath: FR-PVC (IEC -332.1)
Sheath colour: grey
Colour coding
Pair 1: white-blue/blue
Pair 2: white-orange/orange
Pair 3: white-green/green
Pair 4: white-brown/brown

Shipping weight [kg]: 11.5



TRANSMISSION PARAMETERS:

Insertion Loss_[1-100MHz] $\leq 1.967 \sqrt{f} + 0.023f + 0.050/\sqrt{f}$ dB
NEXT_[1-100MHz] $\geq 35.3 - 15 \log(f/100)$ dB
PSNEXT_[1-100MHz] $\geq 32.3 - 15 \log(f/100)$ dB
ELFEXT_[1-100MHz] $\geq 23.8 - 20 \log(f/100)$ dB
PSELFEXT_[1-100MHz] $\geq 20.8 - 20 \log(f)$ dB
RL_[1≤f<10MHz] $\geq 20 + 5 \log(f)$ dB
RL_[10≤f<20MHz] ≥ 25 dB
RL_[20≤f<100MHz] $\geq 25 - 7 \log(f/20)$ dB
Delay_[1-100MHz] $\leq 534 + 36/f$ ns
Delay Skew_[1-100MHz] ≤ 45 ns

Part number	Name
39.A0360	UTP PowerCat 5e PVC 4 Pair Cable, 305m

MOLEX PREMISE NETWORKS:

**Eastern Europe
Headquarters**
Molex Premise Networks Sp. z o.o.

ul. Powązkowska 44 C
01-797 Warszawa
Tel. +48 22 326 07 20
Fax +48 22 326 07 30

www.molexpn.com.pl

Corporate Headquarters
Molex Premise Networks

8 Executive Drive
Hudson, NH 03051 USA
Tel. +1 603-324-0200
Toll Free +1 800-866-3827
Fax +1 603-577-8770

www.molexpn.com

Western Europe Headquarters
Molex Premise Networks Limited

Concorde Way,
Segensworth North
Fareham Hants
PO15 5RL England
Tel. +44 (0) 1489 572 111
Fax +44 (0) 1489 559 106

www.molexpn.co.uk

Asia Pacific Headquarters
Molex Premise Networks

PTY Limited
60-78 Abey Road
Melton, Victoria,
Australia 3337
Tel. +61 3 99 71 7111
Fax +61 3 99 71 7199

www.molexpn.com.au